



DBHIDS

# Executive Directors Meeting

October 2, 2019

City of Philadelphia

 **DBHIDS**

DEPARTMENT of BEHAVIORAL HEALTH  
and INTELLECTUAL disABILITY SERVICES



# Welcome

David T. Jones, Commissioner


City of Philadelphia

 **DBHIDS**

DEPARTMENT of BEHAVIORAL HEALTH  
and INTELLECTUAL disABILITY SERVICES



# Commissioner's Announcements



Procurement for BH to increase coordination for  
School District of Philadelphia Students



Annual Health Care Growth Rate 2-6%



# Community Autism Peer Specialist (CAPS) Program

## **Mental Health Partnerships**

Lauren Flynn, Division Director  
Katy Kaplan, Director Decision Support  
Alik Koumenis, CAPS

## **Community Behavioral Health**

Lauren Katy Kaplan, Director  
Decision Support

# What Is Peer Support?

Certified Peer Specialist (CPS) uses their own mental health recovery experience to support others

trained and certified to provide mentoring, guidance and support

someone who knows first-hand the challenges associated with having a mental health diagnosis

help others work toward meaningful recovery from mental health challenges

assists with development of person-centered planning and delivery of services





# Peer Support In Pennsylvania

**2004**

2004 CPS Initiative launched by Pennsylvania's Office of Mental Health & Substance Abuse Services (OMHSAS)

**2007**

2004 CPS Initiative launched by Pennsylvania's Office of Mental Health & Substance Abuse Services (OMHSAS)

**2017**

Over 4,600 individuals have been trained as certified peer specialists (CPS)

**2019**

Community Autism Peer Specialist (CAPS) training and program launch



# Community Autism Peer Specialist (CAPS) Program

Based on the Certified Peer Specialist model in mental health, the CAPS program pairs an individual with autism who has completed a peer support training program, with other individuals with autism to achieve personal wellness and community integration goals. Activities are chosen by the participant to build employment and/or post-secondary education and leadership skills, to live independently, care for their own health, navigate interpersonal relationships, use public transportation, engage in the community, and other areas of growth.

## Stakeholder Involvement:


Self-advocates  
Caregivers  
Peer specialists  
Bureau of Supports for Autism & Special Populations, ODP  
Bureau of Policy, Planning and Program Development, OMHSAS  
Department of Behavioral Health & Intellectual disAbility Services  
Community Behavioral Health  
Policy and Analytics Center, AJ Drexel Autism Institute

- Eastern Region ASERT
- Philadelphia Autism Project

Mental Health Partnerships  
TU Collaborative on Community Inclusion



# Caps Training Requirements



18 years of age or older with a diagnosis of autism



A high school diploma or GED from an accredited institution



Within the past three years:

Maintained at least 12 months of successful full or part-time paid or voluntary work experience OR  
Obtained at least 24 credit hours of post-secondary education



Two professional references are required

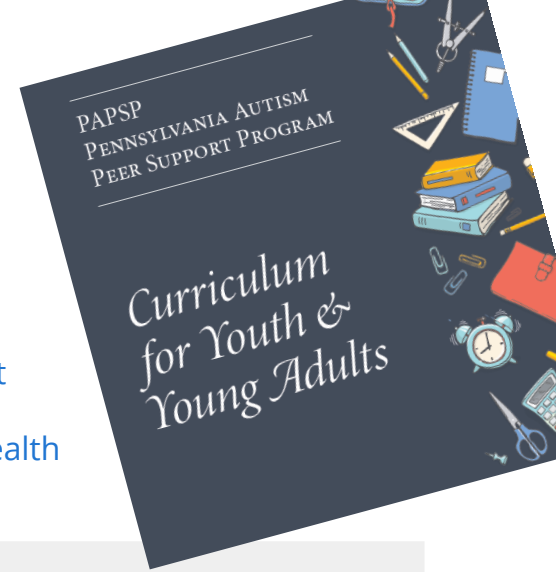
(can be past employers, educators, or other individuals who can speak to your skills and fit for this training program)



# CAPS Program Development

**CAPS Curriculum:** Val Paradiz, a self-advocate and mom of a son with autism developed a CAPS curriculum for young adults and adults with Autism (160 lessons/modules).

**CAPS Training Program:** Twelve individuals with Autism graduated from the first CAPS training class. They completed a 75-hour training consisting of classroom instruction, self-paced homework, and four hours shadowing a mobile mental health peer specialist in the field.



## Service Delivery

Mental Health Partnerships (MHP) is piloting the program through CBH

Program consists of a supervisor and 5 part- and full-time CAPS

CAPS service launched in September 2019

# Eligibility Requirements

CAPS Program

Next Steps

Age 14 and up with a diagnosis of autism spectrum disorder

Reside in Philadelphia County

Have Community Behavioral Health (CBH) insurance



## Referral/Contact Information

Jim Markey, Supervisor  
Lauren Flynn, Director

Mental Health Partnerships  
Office: 267-507-3865 | Fax: 215-525-2741  
[jmarkey@mhphope.org](mailto:jmarkey@mhphope.org)  
[lflynn@mhphope.org](mailto:lflynn@mhphope.org)



# Community Behavioral Health (CBH) Updates

October 2, 2019

City of Philadelphia



DEPARTMENT of BEHAVIORAL HEALTH  
and INTELLECTUAL disABILITY SERVICES



# Overview of Intensive Behavioral Health Services (IBHS)

Behavioral Health Rehabilitative Services (BHRS) will cease to exist and it will be replaced by IBHS.

The State anticipates promulgation of the regulations in October with implementation to follow 90 days thereafter.

This provides all of us an opportunity to enhance community-based mobile services for children and families.



# IBHS – Key changes



## Significant changes include:

Greater emphasis on Evidence Based Practices (EBPs)

Standalone license with 3 subcategories (individual, group, ABA)

Enhanced supervision requirements

Increased staff qualification and training

*It is imperative that you take this opportunity to begin to educate yourself and prepare for this change.*



Community Behavioral Health

A DIVISION OF DBHIDS | CBHPHILLY.ORG

Search ...



CBH Member Services 888-545-2600

English

Powered by Google Translate



Members ▾ Providers ▾ About Us ▾ Services ▾ Contact Us ▾ DBHIDS

Intensive Behavioral Health Services (IBHS)

CBH Provider Manual

Provider Bulletins

Provider Notices

Incident Reporting

Medical Necessity Criteria

Click here for MORE

# SERVING PHILADELPHIA

CBH is Proud To Be A Diverse And Innovative Organization That Supports Wellness, Resiliency, And Recovery For All Philadelphians.

[Read more ...](#)





# Provider Technical Assistance (TA) for Valued Based Purchasing (VBP): Health Management Associates

## 1. VBP Readiness Assessment

- Beginning November 1, 2019 all CBH providers will have the opportunity to complete an online assessment of their readiness to engage in value based reimbursement.
- Providers will have until December 31, 2019 to complete the assessment.

2. **Monthly Webinars** The first webinar will be at the end of October. This will describe the VBP readiness initiative to providers.

## 3. VBP Workshops

- Providers will have the opportunity to participate in a series of 4 half day long VBP workshops. (Dates will be announced soon)

4. **Office Hours** Weekly office hours will be held throughout the initiative.



# Provider Rate Request Policy

A concerted effort has been made to revise the Provider Rate Request Policy; highlights of the policy include:

- Documentation requirements to accompany the request;
- Timeframe parameters regarding when requests can be submitted;
- All requests will be submitted through a centralized email address;
- A Provider Notification is forthcoming.





# Medicated-Assisted Treatment

Roland Lamb,  
Deputy Commissioner

City of Philadelphia



DEPARTMENT of BEHAVIORAL HEALTH  
and INTELLECTUAL disABILITY SERVICES



# Philadelphia Resilience Project Update

Dr. Jill Bowen,  
Deputy Commissioner

City of Philadelphia



**DBHIDS**

DEPARTMENT of BEHAVIORAL HEALTH  
and INTELLECTUAL disABILITY SERVICES



# Medicated-Assisted Treatment

One Year since emergency response declaration and creation of the PHL Resilience Project

1. Clear Encampments - led by MDO for HHS
2. Reduce Criminal Activity – led by MDO for CJ & Public Safety
3. Reduce Unsheltered – led by OHS
4. Reduce Trash and Litter – led by CLIP
5. Reduce ODs and Spread of Infectious Disease – Led by PDPH
6. Increase Tx Options – Led by DBHIDS
7. Mobilize Community Response – Led by MDO for Community Service



## Mission Area 6: Increase Treatment Options/Access (led by DBHIDS)

1. Increase number of individuals (Medicaid eligible) participating in MAT compared to 2017 baseline:
  - **12,604 (2017) vs 14,725 (2018)**
  - Deployed mobile outreach teams including medical professionals to provide MAT
  - Made policy changes to increase MAT across the system
3. Launched a Treatment Availability Database (TAD), which provides real-time information about availability of beds  
[www.dbhids.org/MAT](http://www.dbhids.org/MAT)
4. Expanded “warm hand-offs” at EDs and CRCs, to help more people participate in substance use treatment and services  
**Linked to behavioral health services: 424 individuals (CY2017) through CRAFT vs 857 individuals (CY2018) through CRAFT & ROSE and 1,069 individuals (Q1 + Q2 CY2019) through CRAFT, ROSE, and BHSI**
5. Continued contract with First Step Staffing to connect individuals in recovery to entry-level employment
6. Created an EMS alternative response unit (AR-2) staffed by a paramedic, case manager and social worker to offer “warm hand-offs” after responding to an opioid overdose. AR-2 helped 52 patients get into treatment in its first five months.



## Mission Area 3: The Summer Kensington Strategy

1. Coordination Efforts Included: DBHIDS, OHS, CBH, BHSI, CWEU, SEPTA, DBHIDS Homeless Outreach, Project Home, ODAAT, Journey of Hope, NET, PAD, Prevention Point, Wedge, Merakey, and Pathways to Recovery
2. Data was entered by 12 treatment engagement workers/teams.

288 total contacts

244 people contacted

44 total placements  
(43 unique individuals)

A Provider Notification is forthcoming.

### Placements

22 OHS Shelter  
6 Safe Haven  
5 Detox Program  
4 Respite  
3 OHS Outreach Beds  
2 Other Social Service Agency  
1 Journey Of Hope  
1 Medical ER/Hospital



# Medicated-Assisted Treatment

# of Chronically Homeless Individuals Housed	FY2019	FY2018
Safe Haven Discharge To Housing	112	139
Journey Of Hope Discharge To Housing	106	97
Horizon House Housing First Admitted	11	10
Pathways Housing First Admitted	83	64
Unduplicated Count Of Individuals	301	300



## Mission Area 5: Hepatitis A

- The City mobilized resources to host additional Hepatitis A vaccination clinics in Kensington, raise awareness around prevention methods, and distribute hand sanitizer.
- There are vaccination clinics at McPherson Square on Tuesdays and Thursdays. Vaccination clinics are also being offered by providers in the area; vaccinations are also available through folks' primary care providers.
- On Monday, September 23<sup>rd</sup>, the City expanded its prevention efforts by installing two temporary restroom trailers and a hand washing sink.


*With the help of civic groups and service providers, the City identified locations to pilot two restroom trailers and one hand washing sink. The locations were selected because they were: 1) close to providers, 2) they addressed a sanitation need, 3) they had access to water and electricity, 4) they did not impede the flow of traffic, and 5) they were not directly adjacent to residences. The locations are:*

- Restroom Trailer #1: On Monmouth (Monmouth & Kensington)
- Restroom Trailer #2: 2812 Kensington (Somerset & Kensington)
- Handwashing Sink: On F Street (intersection of Kensington)

*The vendor will service the units twice a day, and a cleaning company will provide deep cleaning services daily. CLIP will provide additional trash removal support. The restroom trailers and the hand washing sink will be monitored by CLIP, private security and the Philadelphia Police Department.*







# National Alliance on Mental Illness

Carly Hester, Manager  
NAMI Philadelphia

City of Philadelphia



**DBHIDS**

DEPARTMENT of BEHAVIORAL HEALTH  
and INTELLECTUAL disABILITY SERVICES



# Thank You

## Executive Director's Meeting

City of Philadelphia

 **DBHIDS**

DEPARTMENT of BEHAVIORAL HEALTH  
and INTELLECTUAL disABILITY SERVICES