



4th Annual Youth Non-Profit Symposium

Councilman David Oh

February 24, 2016

Arthur C. Evans, Jr., PhD

Commissioner

Philadelphia Department of Behavioral Health and
Intellectual disAbility Services

The Philadelphia Experience

**Recovery
Transformation to
a Movement...**



Our Vision

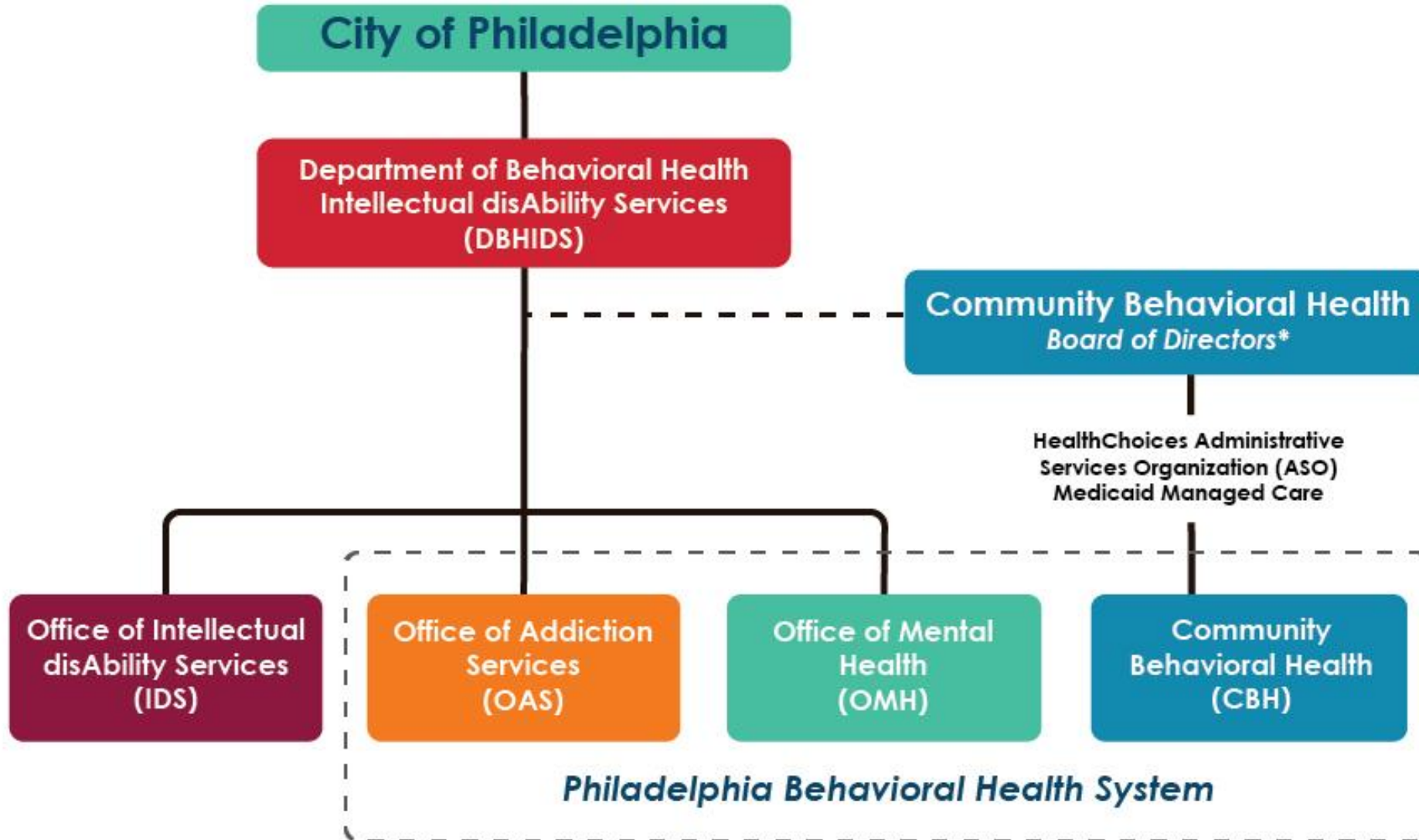
We envision a Philadelphia where all people can achieve health, wellness and self-determination through a comprehensive, holistic, community-based service delivery system

Our Department

Responsible for administering a broad array of supports, treatment, intervention and prevention programs for children, adults, and families impacted by mental health, substance use and intellectual disabilities:

- Serves more than 150,000 Philadelphians each year through a \$1 billion annual budget
- Manages a network of over 300 providers offering full continuum of services
- Functions as single payer for Medicaid, Federal, State and Local Grant (Medicaid managed by City) dollars for Behavioral Health Services

Our Department



*CBH Board of Directors

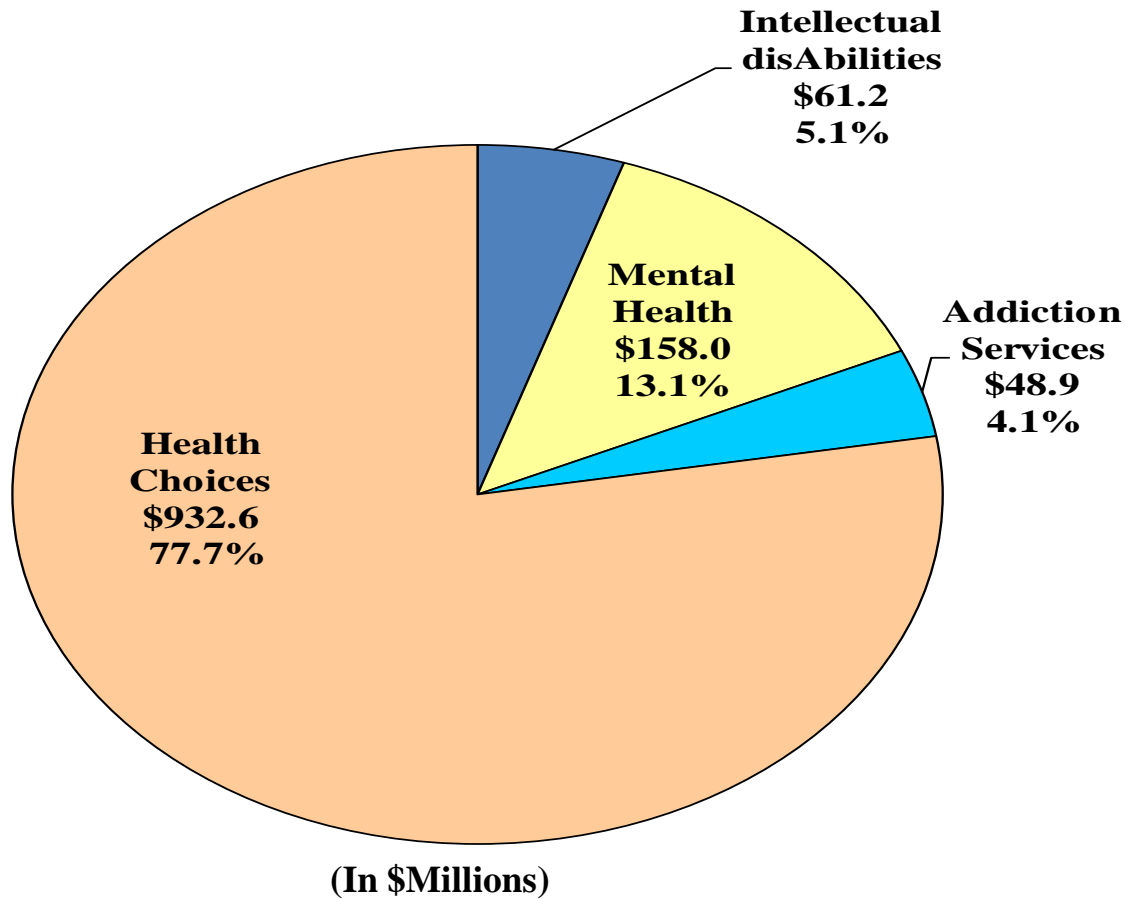
Officers

- Commissioner/DBHIDS, President
- Director/OAS, Vice President
- Deputy Commissioner Finance & Admin/DBHIDS, Secretary/Treasurer

Members

- Commissioner/DHS
- Deputy Commissioner Strategic Planning/DBHIDS
- Deputy Mayor/Office of Health and Opportunity
- Director, Office of Mental Health
- Consumer & Family Task Force Representative

DBHIDS



Program

Major Services

Health Choices:

Psychiatric Inpatient
 D&A Residential Rehabilitation
 Outpatient (Mental Health & D&A)
 Partial Hospitalization
 Residential Treatment for Children
 Behavioral Health Rehabilitative Svcs.
 Case Management

Mental Health:

Residential
 Case Management (for Uninsured)
 Outpatient (for Uninsured)
 Partial (for Uninsured)
 Psychiatric Inpatient (for Uninsured)
 Vocational Rehabilitation
 Social Rehabilitation

Intellectual disAbilities:

Residential
 Family Support
 In-home Services
 Employment
 Supports Coordination

Addiction Services:

Prevention
 Education
 Case Management
 Recovery Housing
 Outpatient (for Uninsured)
 Prison Release

Services

- Mental Health
- Addiction
- Intellectual Disability

Practice Guidelines

- Available electronically and in print
- Search “Philadelphia Behavioral Health”

 
www.bn.com

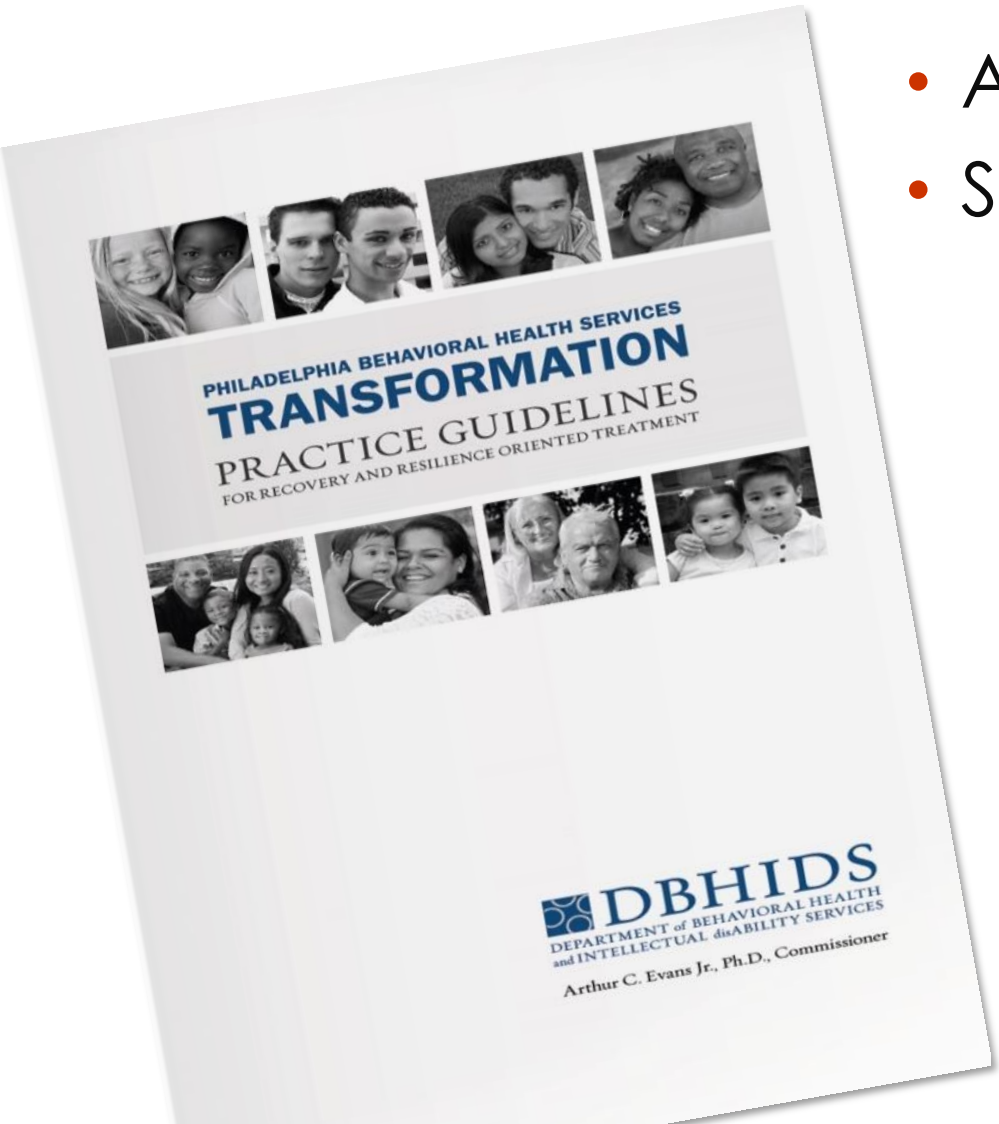
FREE PDF download at

<http://dbhids.org/practice-guidelines>

Write us at

dbhidscommunications@phila.gov

to have a PDF version emailed to you



DBHIDS
DEPARTMENT of BEHAVIORAL HEALTH
and INTELLECTUAL disABILITY SERVICES
Arthur C. Evans Jr., Ph.D., Commissioner

How to become a provider

Mental Health and Addiction Services

- Contract with: The City of Philadelphia
- What: Treatment and Preventative Services
- Who: Uninsured and Underinsured
- Process: Licensed by the Commonwealth required if providing treatment
- Payment: Grants and Fee for Service
- Respond to RFP/RFQ
- Contact: (215) 685-5400
- Website: <http://dbhids.org/about/organization/office-of-mental-health/>

Behavioral Health Special Initiatives (BHSI)

- Contract with: PMHCC
- What: Addiction Services
- Who: Uninsured and Underinsured
- Process: Licensed by the Commonwealth required if providing treatment
- Payment: Fee for Service
- Respond to RFP/ RFQ
- Contact: (215) 546-1200
- Website: <http://bhsi-dbhids.org>

How to become a provider

Medicaid Health Choices Program

- Contract with: Community Behavioral Health (CBH)
- What: Medicaid Treatment Services
- Who: Medicaid recipients
- Process: Licensed through the State. Credentialing by CBH to join the provider Network
- Payment: Fee For Service
- Respond to RFP/RFQ
- Contact: (215) 413-3100
- Website: <http://dbhids.org/cbh/>

Intellectual disAbility Services (IDS)

- Contract with: The Commonwealth (for waiver services) and/or The City of Philadelphia (for Non-waiver services)
- What: Intellectual disAbility Services
- Who: Individuals who have an intellectual disAbility and are registered with IDS
- Process: Enroll with PROMISe & become qualified through the PA-Department of Human Service, Office of Developmental Programs)
- Payment: Fee For Service
- IDS Contact: L. McMillan: 215-685-5900
- PA-DHS and PROMISe Website: <http://www.dhs.pa.gov/provider/promise/enrollmentinformation/index.htm#.Vs21hmf2ZD8>
- Website: <http://dbhids.org/intellectual-disability-services/>

How to become a provider

Philadelphia Infant Toddler Early Intervention Program

- Contract with: The PA-Department of Human Services, Office of Child Development Early Learning [OCDEL] (for waiver services) and the City of Philadelphia (for Non-waiver services)
- What: Infant Toddler Early Intervention Services
- Who: Infants and toddlers between the ages of birth to 3 years who have a developmental delay and are eligible for services.
- Process: Must Enroll with PROMISE. After enrolled, contact the Early Intervention Unit at IDS to express interest.
- Payment: Fee For Service
- Contact: S. Burke 215-685-5941
- Website: <http://dbhids.org/about/organization/intellectual-disability-services-ids/>

Population Health: Kindig, 2003 (IHI)

the health outcomes of a group of individuals, including the distribution of such outcomes within the group. These groups are often geographic populations such as nations or communities, but can also be other groups such as employees, ethnic groups, disabled persons, prisoners, or any other defined group.



[Mental Health First Aid](#)

[On Our Minds](#)

[Calendar](#)

[Behavioral Health Screening](#)



[Get Help Now.](#)

Help Yourself, Help Others

[Mental Health First Aid >>](#)

Learn to identify, understand, and respond to signs of behavioral health challenges or crises.

[On Our Minds >>](#)

Thoughts and updates from Dr. Arthur C. Evans, Jr., Commissioner of DBHIDS and staff.

[Calendar >>](#)

Find awareness events, screenings, or trainings from DBHIDS.

[Behavioral Health Screening >>](#)

If you feel sad, anxious or stressed, this screening tool can help you decide if you need further help.





Mural Arts Program

PORCH LIGHT

Arthur C. Evans, Jr., PhD
Commissioner



Building Brotherhood



Addresses the importance of dialogue and relationship-building amongst **males of color**





Arthur C. Evans, Ph.D.
Twitter: **@ArthurCEvans**
Arthur.C.Evans@phila.gov
DBHIDS.org
Healthymindsphilly.com

Thank You

Connect With Us



@DBHIDS @ArthurCEvans



DBHIDS



DBHIDS

Photos by Steve Weinik

 **DBHIDS**
DEPARTMENT of BEHAVIORAL HEALTH
and INTELLECTUAL disABILITY SERVICES